



Elm Park, London, SW2

2 bedroom flat to let

£485 Per Week

Furnished

Property Details

Keatings Estates are proud to present this charming Victorian flat, offering generous living space, two double bedrooms, and a modern family bathroom. The property also benefits from a private garden ideal for outdoor entertaining or relaxing in the warmer months.

Perfectly positioned on a quiet residential street on Elm Park, Brixton, the flat is a short walk from Brixton Market and the vibrant High Street, home to an eclectic mix of shops, bars, and restaurants. For a more tranquil setting, the green open spaces of Brockwell Park are just twelve minutes away, offering scenic walking routes and a welcome escape from city life.

Features

- Two double bedrooms
- Spacious reception
- Private garden
- Bright and airy
- Close to Brockwell Park
- Close to Central Brixton and Herene Hill

Council tax band C EPC rating D (68)



Elm Park



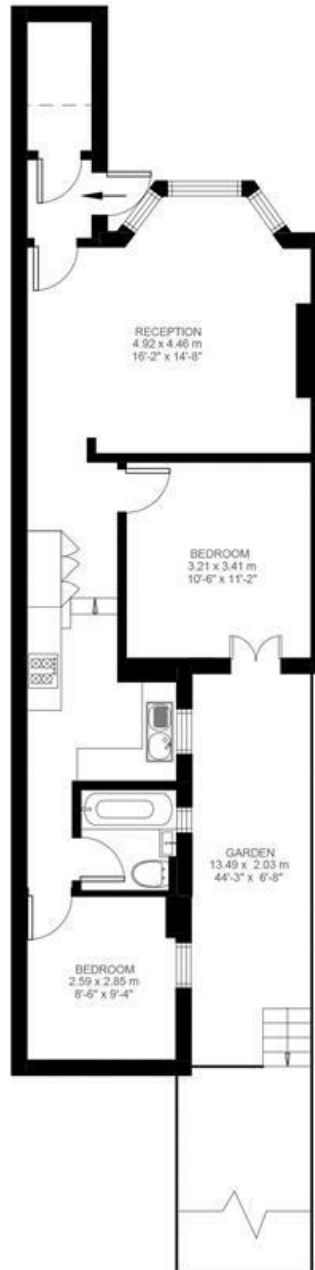
2 Bedroom Flat

Approx internal area:

645 sqft 60 sqm

While we do try our very best, floor plans are produced as a guide only and we take no responsibility for the precise accuracy with which any property is represented

BEDROOM



Lower Ground Floor



Elm Park, London, SW2

